

# Hi-MO X10 Scientist

LR7-60HVH

## 520~530M

- More flexible installation methods, suitable for short frame clamps mounting with high mechanical loading
- High efficiency with better energy generation performance
- N-type TaiRay wafer & HPBC 2.0 innovative technology enhances high product reliability

**15** 15-year Warranty for Materials and Processing

**30** 30-year Warranty for Extra Linear Power Output

### Complete System and Product Certifications

IEC 61215, IEC 61730

ISO9001:2015: ISO Quality Management System

ISO14001: 2015: ISO Environment Management System

ISO45001: 2018: Occupational Health and Safety

IEC62941: Guideline for module design qualification and type approval

**LONGI**



**23.49%**  
EFFICIENCY

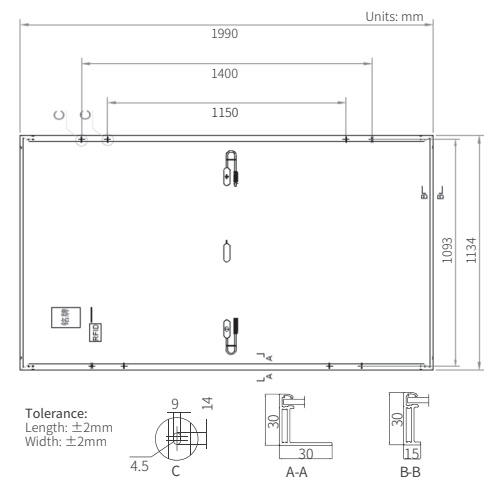
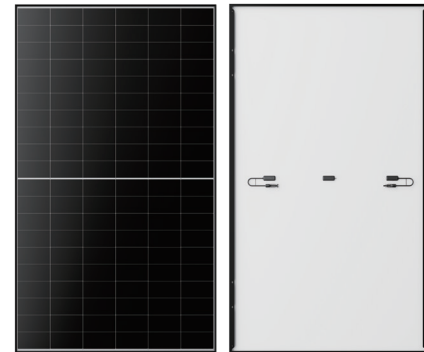
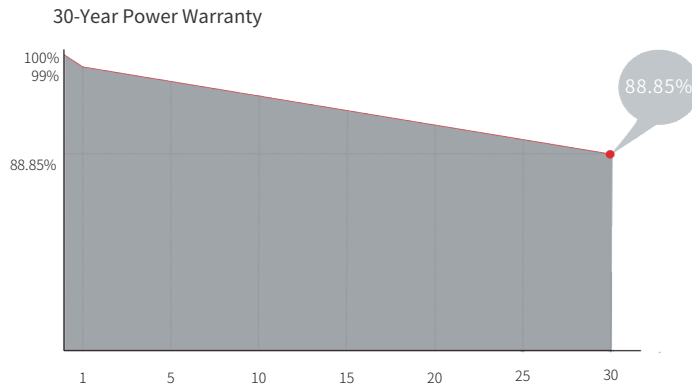
**0~3%**  
TOLERANCE

**1%**  
FIRST YEAR POWER  
DEGRADATION

**0.35%**  
POWER DEGRADATION

**BC-CELL**  
LOWER OPERATING  
TEMPERATURE

## Additional Value



## Mechanical Parameters

Cell Orientation	120 (6×20)
Junction Box	IP68, three diodes
Output Cable	4mm <sup>2</sup> , +400, -200mm/±1400mm length can be customized
Glass	Single glass 3.2mm coated tempered glass
Frame	Anodized aluminum alloy frame
Weight	24.5kg
Dimension	1990×1134×30mm
Packaging	36pcs per pallet / 180pcs per 20' GP / 792pcs per 40' HC

## Electrical Characteristics

STC : AM1.5 1000W/m<sup>2</sup> 25°C

Test uncertainty for Pmax:  $\pm 3\%$

Module Type	LR7-60HVH-520M	LR7-60HVH-525M	LR7-60HVH-530M
Testing Condition	STC	STC	STC
Maximum Power (Pmax/W)	520	525	530
Open Circuit Voltage (Voc/V)	44.48	44.58	44.68
Short Circuit Current (Isc/A)	14.85	14.95	15.05
Voltage at Maximum Power (Vmp/V)	36.71	36.81	36.91
Current at Maximum Power (Imp/A)	14.17	14.26	14.36
Module Efficiency(%)	23.04	23.26	23.49

## Operating Parameters

Operational Temperature	-40°C ~ +85°C
Power Output Tolerance	0 ~ 3%
Maximum System Voltage	DC1500V (IEC)
Maximum Series Fuse Rating	25A
Nominal Operating Cell Temperature	45±2°C
Protection Class	Class II
Fire Rating	IEC Class C

## Mechanical Loading

Front Side Maximum Static	5400Pa
Loading Rear Side Maximum	2400Pa
Static Loading Hailstone Test	25mm Hailstone at the speed of 23m/s

## Temperature Ratings (STC)

Temperature Coefficient of Isc	+0.050%/°C
Temperature Coefficient of Voc	-0.200%/°C
Temperature Coefficient of Pmax	-0.260%/°C